



## Genius Weft Hair Extensions

*The Complete Guide — Specification, Installation & Care*

One purchase, zero visible tracks. COOVIP's Genius Weft Hair Extensions blend seamlessly with your natural hair, delivering instant volume, length and movement that looks completely your own. Crafted from 100% Raw Human Hair with full cuticle intact and aligned in one direction, each weft features an ultra-thin, flexible seam that lies flat against the scalp and can be cut anywhere along the track without shedding — unlocking a truly invisible, salon-quality result.

100% Raw Human Hair

Cutable, No Shedding

Lasts up to 2-3 Years

180°C Heat Safe

## Product Specification

|                                |   |
|--------------------------------|---|
| <b>Hair Quality</b>            | 100% Raw Human Hair, cuticles intact and aligned root-to-tip, unprocessed and ethically sourced for natural strength and shine. |
| <b>Hair Texture</b>            | Natural straight; develops a soft natural wave when wet, air-dried or diffused.   |
| <b>Hair Setting</b>            | Can be curled, straightened, washed, dyed and cut just like your own natural hair.  |
| <b>Heat Resistance</b>         | Safe for styling tools up to 180°C / 356°F.   |
| <b>Weft Weight</b>             | 1 weft (strand) = 20g   5 wefts = 100g full set.  |
| <b>Weft Length &amp; Width</b> | Available 18"–24", with a standard sewn width of approx. 11" (28cm) per 20g weft.   |
| <b>Seam Thickness</b>          | Ultra-thin 0.2cm (0.078") seam — virtually undetectable once installed.   |
| <b>Recommended Amount</b>      | 100–200g per full head for a full, voluminous result.   |
| <b>Longevity</b>               | 9–12 months with regular wear; up to 2–3 years with proper professional care.   |

## Why Choose Genius Weft

### 1 **Cuttable, Zero Shedding**

Unlike hand-tied wefts that unravel when cut, Genius Weft can be trimmed at any point along the seam without sealing or extra glue — giving stylists full freedom to customize fit.

### 2 **No Return Hair**

There are no short, irritating return hairs at the seam, which means no itchiness, no poking, and far greater comfort for sensitive scalps.

### 3 **Ultra-Thin, Invisible Seam**

At just 0.2cm thick, the seam lies completely flat against the scalp, making the track virtually impossible to detect even when hair is worn up.

### 4 **Lightweight Comfort**

Far lighter than traditional wefts with clips or nets. Comfortable for all-day, all-night wear with no pulling or heaviness.

### 5 **Full Styling Freedom**

Curl, straighten, wash, blow-dry and color exactly as you would your own natural hair, with consistent natural movement.

### 6 **Built to Last**

With proper care, a single set can be reinstalled and reused for up to 2–3 years, making it a smart long-term investment for both individuals and salons.

## Installation Guide — Bead & Sew Method

Genius Weft installs beautifully with the classic micro-bead foundation + hand-sew technique used by professional stylists. Follow the steps below for a secure, salon-quality result.



### Section the Hair

Take a small triangular section, about half an inch wide, along a clean horizontal parting.



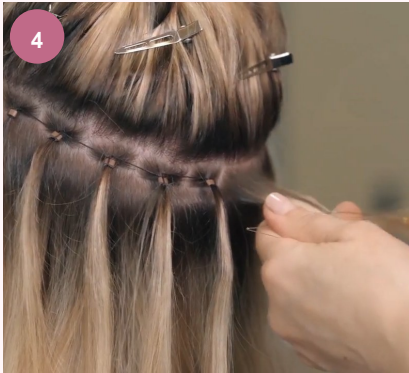
### Start Beading

Thread a micro bead onto the sectioned hair and slide it into place to begin the foundation row.



### Secure with Pliers

Clamp each bead firmly using professional micro-link pliers so the foundation stays put.



### Continue the Row

Repeat sectioning and beading evenly across the head to complete the full foundation track.



### Loop the Hair

Sew the weft onto the beaded row — after each loop, pass the needle right after the bead, then back over the weft to lock the stitch.



### Cut the Thread

Once the weft is sewn securely along the row, cut the thread close to the last stitch.

---

## Installation Guide — Continued



### Prepare to Sew

Move to the next section and ready the needle and thread to attach the following weft.



### Start with a Knot

Begin the new row by tying a secure knot at the starting point before sewing.



### Cut & Finish

Sew across the row, cut the thread and tuck away the tail for a clean, invisible finish.

---

## Home Care Tips

- Wash with sulfate-free shampoo 2–3 times per week.
- Apply conditioner only on mid-lengths to ends — avoid the root/attachment area.
- Brush 2–3 times daily with a loop or extension-safe brush, holding near the row.
- Use a heat protectant spray before styling with hot tools.
- Sleep with a loose braid or low ponytail on a silk pillowcase to prevent tangling.
- Store unused wefts in a silk bag, fully dry, away from direct sunlight.

## Frequently Asked Questions

### Q. Can I cut the Genius Weft?

A. Yes — it's specially designed to be cut at any point without shedding.

### Q. How long does Genius Weft last?

A. With proper care, 9–12 months of regular wear, and up to 2–3 years with professional maintenance and reinstalls.

### Q. Will it feel heavy?

A. No. The wefts are ultra-thin and lightweight for maximum all-day comfort.

### Q. What's the best installation method?

A. Sewing or silicone-lined micro beads (braidless sew-in) are the most popular and reliable techniques.

### Q. How many rows or grams do I need?

A. One row adds subtle fullness; two rows give volume plus length; for a full transformation, 100–200g across multiple rows is recommended.

---

## About COOVIP

COOVIP is a Top-3 European hair extension manufacturer, trusted by over 7,000 salons worldwide. We supply factory-direct — no middlemen — cutting costs by 30–50% while keeping premium quality. Every order ships within 24 hours with 2–3 day global delivery via DHL/FedEx, fully trackable. Custom color matching is available: send us a hair sample or color code and we'll hand-blend wefts to your exact shade — ideal for salons and wholesale partners. No MOQ; bulk orders (US\$1000+) receive extra discounts and custom branded packaging, backed by a 7-day warranty and free replacement.