



COOVIP Butterfly Weft (XO Invisible Weft) — 100% Raw Human Hair | 60+ Shades | No Glue · No Heat | Micro-Bead Install

COOVIP Butterfly Weft Hair Extensions — also known as XO Invisible Weft — feature a unique dual-sided design: one side is an ultra-thin invisible weft, the other a PU base with pre-punched holes. Built on 100% single-donor raw human hair with cuticles fully intact, this weft lays completely flat against the scalp for the most natural, undetectable result. No glue, no heat — installed with micro-beads only.

INVISIBLE PU BASE Pre-punched holes, lies flat	NO HEAT · NO GLUE Micro-bead install only	100% RAW HUMAN HAIR Single-donor, cuticle-intact
--	---	--

Hair Type	100% Raw Single-Donor Human Hair	Also Known As	XO Invisible Weft / Butterfly Extensions
Weight	50g per weft / 100g full head	Weft Width	35cm per weft
Lengths	16" – 26" available	PU Base	Pre-punched holes for micro-bead install
Installation	Micro-Bead — No Heat, No Glue	Heat Safe	Up to 180°C / 356°F after install
Lifespan	12+ Months with Proper Care	Move-Up	Every 6–8 Weeks Recommended

Key Advantages

✓ Natural & Invisible Look	PU base with pre-punched holes lays completely flat — gives the illusion of hair growing naturally from the scalp.
✓ Great for Fine & Thin Hair	Lightweight ultra-flat design adds volume without stressing natural strands. Most discreet weft method available.
✓ No Glue · No Heat · No Damage	Beads thread through the PU holes — no chemicals, no heat tools, no adhesive. Gentlest weft install available.
✓ 360° Natural Movement	Each bead point allows full movement in all directions, just like natural hair — no stiff or heavy sections.
✓ Durable & Reusable	Raw human hair stays soft, tangle-free, and holds color and heat styling beautifully across multiple installs.
✓ Fully Customizable	Available in 60+ shades with custom color-matching. Cut between PU holes to fit any head shape or width.

Tools Required

Micro Silicone Beads	Silicone-lined beads threaded through PU holes — color-matched for invisibility
Loop Hook / Bead Threader	Pulls natural hair sections through the pre-punched holes in the weft track
Professional Pliers	Clamps beads flat — firm hold without damaging natural hair or weft
Tail Comb	Clean horizontal sectioning, 1–2cm from scalp for invisible row placement
Hair Clips	Holds upper layers away cleanly while working each installation row

How Much Hair Do I Need?

Amount	Wefts	Effect	Best For
100g	2 wefts	Full coverage, natural volume	Standard full head — most clients
150g	3 wefts	Extra volume + added length	Medium to thick hair
200g	4 wefts	Maximum density transformation	Short starting hair, dramatic change

■ Always leave a 1–2cm shadow zone around the entire hairline. Never place beads flush to the perimeter or scalp — this prevents traction and keeps the weft completely hidden.

Butterfly Weft installs with micro-beads through pre-punched PU holes — no heat, no glue, no sewing. Result: completely flat, invisible, natural movement in all directions.

<p>STEP 01</p> 	<p>STEP 02</p> 	<p>STEP 03</p> 	<p>STEP 04</p> 
<p>Prep the Hair Wash and fully dry client's hair. No oils or conditioner near roots — prevents bead slipping.</p>	<p>Section Horizontally Clip top layer away. Leave clean row exposed at nape, 1–2cm below the natural part line.</p>	<p>Hook Hair Through Weft Hole Use loop hook to pull a small section of natural hair through one pre-punched hole in the PU track.</p>	<p>Thread Bead onto Loop Slide a silicone-lined micro-bead onto the loop hook alongside the natural hair inside the hole.</p>
<p>STEP 05</p> 	<p>STEP 06</p> 	<p>STEP 07</p> 	<p>STEP 08</p> 
<p>Pull Hair Through the Bead Pull natural hair through the bead using the loop. Both weft and hair are now held by the bead.</p>	<p>Secure Bead with Pliers Clamp bead flat with extension pliers — firm and even. Weft should sit flush against the scalp row.</p>	<p>Continue Along the Row Repeat at even intervals until every PU hole is beaded and the full weft track is secured.</p>	<p>Release the Top Layer Unclip the top layer. Natural hair falls over the weft — extensions should be completely invisible.</p>

Care & Styling Guide



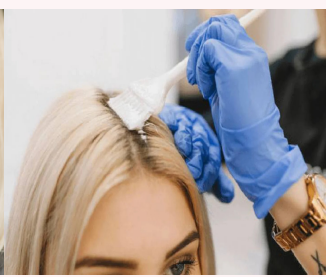
Sulfate-Free Shampoo & Deep Conditioner

Wash 2–3x/week; deep condition mid-lengths and ends only. Never scrub at bead points.



Blow-Dry or Air-Dry

Air-dry when possible. If blow-drying, use medium heat near beads; keep under 120°C.



Dye Darker or Bleach Lighter

100% raw human hair takes color beautifully — have a professional color-match for best results.



Curl, Straighten — Under 180°C

Style freely with curling or flat irons, always under 180°C with a heat protectant spray.

✓ Avoid Beads	Keep conditioner and oils away from bead points to prevent slipping.
✓ Loop Brush Only	Detangle gently from ends upward — hold near bead while brushing, no paddle brushes.
✓ Braid Before Bed	Sleep in a loose braid on a silk or satin pillowcase to reduce tangling and friction.

Frequently Asked Questions

Q: Can the weft be cut to size?

A: Yes — trim between PU holes only, never through them.

Q: Is there any heat or glue involved?

A: No. Micro-beads and pliers only — no heat, no adhesive, no chemicals.

Q: How often do I need a move-up?

A: Every 6–8 weeks. Open beads, reposition weft, re-clamp fresh beads.

Q: Can I color or bleach the extensions?

A: Yes — 100% raw human hair accepts color just like natural hair.

Q: Is this suitable for fine or thin hair?

A: Yes. The flat PU base and 50g weft make this ideal for fine hair.

Q: How long do they last?

A: 12+ months with proper care, reusable across multiple installs.

Butterfly Weft vs Other Extension Methods

Feature	Butterfly Weft	Genius Weft	Machine Weft
Installation	Micro-bead (no sew)	Bead + Sew-in	Sew-in or Bead
Heat / Glue	None	None	None
Weft Type	PU + Invisible	Ultra-thin seam	Standard seam
Best For	Fine / thin hair	All hair types	Volume & density
Cutable	Between holes only	Yes — anywhere	Yes — anywhere
Lifespan	12+ months	9–12 months	12–18 months