

COOVIP Invisible Tape-In — 100% Raw Human Hair | Hand-Sewn Unseen Design | Ultra-Thin 0.9cm Tape | No Heat · No Glue Gun

COOVIP Invisible Tape-In Extensions feature a patented hand-sewn design where hair is sewn directly into the adhesive, creating the illusion of hair growing from the scalp. Built on 100% raw 12A-grade European human hair with cuticles fully intact, these extensions deliver zero visible tape or bulk — undetectable volume and length with medical-grade adhesive that is gentle, reusable, and residue-free.

TRULY INVISIBLE DESIGN	MEDICAL-GRADE ADHESIVE	100% RAW HUMAN HAIR
Hand-sewn into tape — no visible tabs, no bulk, scalp-like finish	Latex-free, residue-free — removes cleanly with 91% alcohol	12A European donor, cuticle-aligned — naturally tangle-free

### Product Specifications

<b>Hair Type</b>	100% Raw European Donor Human Hair (12A Grade)	<b>Texture</b>	Natural Straight / Soft Wave When Air-Dried
<b>Weight / Piece</b>	2.5g per tape tab	<b>Tape Size</b>	4cm x 0.9cm (Ultra-Thin Transparent)
<b>Application</b>	Sandwich Method — 2 tapes per row (~5g/row)	<b>Lengths</b>	18" – 24" (Custom Up to 32"+)
<b>Recommended</b>	100g – 200g for full head (40–80 tapes)	<b>Installation</b>	Cold Sandwich — No Heat, No Glue Gun
<b>Heat Safe</b>	Style freely once installed (up to 180°C)	<b>Lifespan</b>	12–24 Months With Proper Care
<b>Move-Up</b>	Every 6–8 Weeks Recommended	<b>Reusability</b>	Yes — Re-tape with COOVIP Replacement Tape

### Why Choose COOVIP Invisible Tape-In Extensions?

#### Truly Invisible, Truly Natural

Hair is hand-sewn into the adhesive — no visible tabs, no bulk. Creates the illusion of hair growing directly from the scalp.

#### Gentle & Non-Damaging

Medical-grade adhesive grips securely without damaging hair. Remove residue-free with 91% alcohol and reuse with replacement tape.

#### Premium 12A Raw Human Hair

Acid-free, silicone-free European raw hair mimics natural movement and shine. Wash, cut, curl, or straighten freely.

#### Factory-Direct Excellence

20+ years of manufacturing expertise. Custom color matching, wholesale pricing, and private-label options for salons.

### Tools Required

Tool	Purpose
<b>Invisible Tape-In Tabs</b>	Hand-sewn, color-matched tabs — no visible tab, scalp-like finish
<b>Tail Comb</b>	Clean horizontal and vertical sub-sectioning along each row
<b>Sectioning Clips</b>	Hold upper layers away while working each row section
<b>Professional Tape Pliers</b>	Clamp each tape sandwich flat for a firm, seamless seal
<b>91% Alcohol Spray</b>	Dissolves adhesive cleanly for safe, residue-free removal
<b>COOVIP Replacement Tape</b>	Re-tape and reapply the same hair after each 6–8 week move-up

### How Many Rows Do I Need?

Rows	Tapes	Result	Best For
<b>1 Row</b>	8–10 tapes	Adds fullness & blends gaps invisibly	Thin / fine hair, crown fill
<b>2 Rows</b>	16–20 tapes	Lengthens & noticeably thickens	Medium length / density
<b>3 Rows</b>	24–30 tapes	Dramatic length & volume transformation	Short / thick hair, bobs

■ Always leave a 2cm shadow zone around the entire hairline perimeter. Never place tape tabs flush to the hairline — keeps every bond hidden and prevents tension at the edges.

### Aftercare & Maintenance

#### Washing

- Wash 2–3x/week with sulfate-free, color-safe shampoo.
- Avoid oils and conditioner near the tape roots — weakens bonds.
- Rinse cool or lukewarm; condition on ends only.

#### Drying

- Air-dry whenever possible, especially around the tape area.
- Blow-dry on medium heat (100–120°C) with heat protectant.
- Never sleep with wet hair — prevents matting at the tapes.

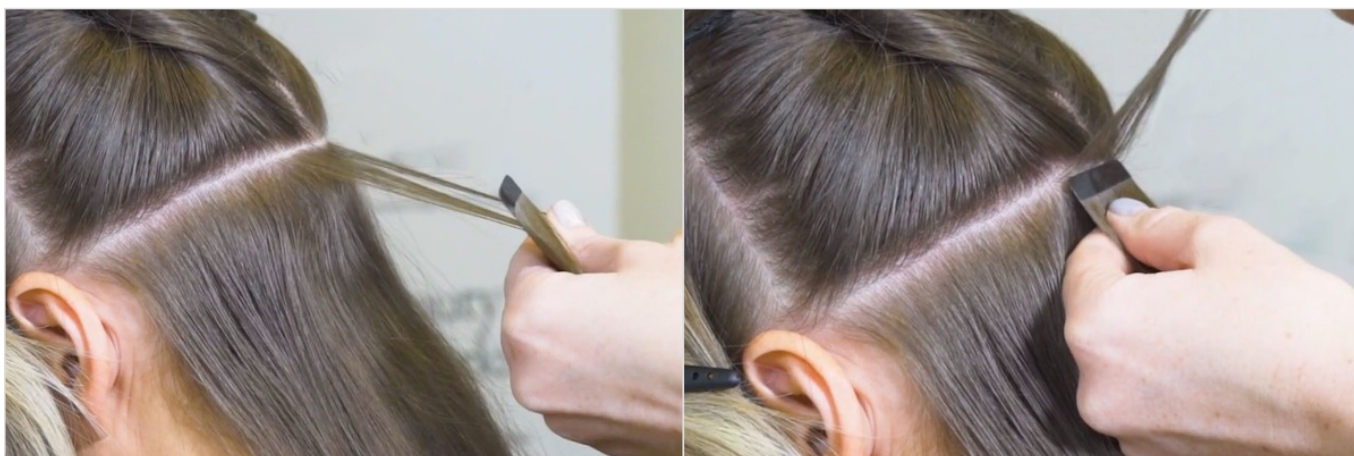
#### Brushing & Styling

- Brush from ends upward, holding near the tape while brushing.
- Use a soft-bristle or loop extension brush only.
- Sleep in a loose braid on a silk or satin pillowcase.

#### Removal & Reuse

- Spray 91% alcohol on tape bonds and wait 5 seconds.
- Gently slide tapes apart — never pull or tug.
- Clarifying shampoo + deep condition, then re-tape to reuse.

Each tape pair is clamped flat with professional pliers for a secure, natural-looking result. Stagger tapes in a brick pattern for undetectable coverage that lasts 6–8 weeks before move-up.



**01**

### Create Horizontal Sections

Section hair horizontally, leaving a 2cm shadow zone around the entire hairline. Clip upper layers away and take a vertical sub-section 0.5–1cm wide using a tail comb.

**02**

### Integrate Tape Tab Into the Hairline

Peel the backing off one tape tab. Place the sticky side underneath your natural hair, 1cm from the scalp — never touching the scalp. Press firmly for 10 seconds.



**03**

### Seal With Professional Pliers

Peel the second backing and sandwich natural hair with a matching tape tab on top. Clamp flat with tape pliers for a firm, seamless, invisible bond.

**04**

### Repeat Application

Continue placing sandwiched tape tabs along the row at even intervals. Use 8–10 tapes per row for full, undetectable coverage across the section.

**05**

### Work to a Brick-Work Pattern

Offset each row's tab placement like bricklaying — no tape sits directly above the row beneath it. Release top layers and blend naturally over the tapes.

### COOVIP Invisible Tape-In vs Standard Tape-In Extensions

Feature	COOVIP Invisible Tape-In	Standard Tape Extensions
<b>Tape Visibility</b>	Zero — hair sewn into adhesive	Tab visible at root when parted
<b>Cuticle Layer</b>	100% Intact & Aligned	Stripped or Misaligned
<b>Hair Grade</b>	12A Raw European Donor	Remy or Lower Grade
<b>Tape Size</b>	4cm x 0.9cm Ultra-Thin Transparent	4cm x 0.8cm Standard
<b>Adhesive</b>	Medical-Grade, Residue-Free	Generic, Sticky Residue
<b>Reusability</b>	Yes — Replace Tape Only	Limited, Tape Often Fails
<b>Lifespan</b>	12–24 Months With Care	6–12 Months
<b>Best For</b>	Fine / thin hair, maximum discretion	General use, normal hair density

### Seasonal Care Tips

#### Summer

- Shield hair from UV to prevent frizz and colour fading.
- Trim regularly to avoid split ends.
- Apply leave-in conditioner before swimming — protects against chlorine weakening bonds.

#### Winter

- Use a silk pillowcase to reduce friction overnight.
- Deep condition weekly for extra hydration in cold, dry air.
- Brush gently after wearing hats or beanies to prevent matting at tapes.

■ Need custom colors, lengths, or wholesale pricing? COOVIP HAIR is a factory-direct manufacturer — contact us for color matching, bulk orders, and salon support at [cooviphair.com](https://cooviphair.com).