

COOVIP Machine Weft — 100% Raw Human Hair | Double-Drawn | Sew-In & Beaded Methods

COOVIP Machine Weft Hair Extensions are crafted by precision sewing for a dense, durable weft with a reinforced seam. Built on 100% raw human hair with cuticles fully intact and aligned in one direction, these extensions deliver maximum volume, tangle-free wear, and the freedom to curl, straighten, colour, and wash — the go-to choice for stylists who demand lasting results.

DOUBLE-DRAWN DENSITY Consistent root-to-tip thickness for maximum fullness	REINFORCED SEAM Precision stitching — minimal shedding, lasting durability	100% RAW HUMAN HAIR European donor, cuticle-aligned — naturally tangle-free
--	--	---

Product Specifications

Hair Type	100% Raw European Donor Human Hair	Texture	Natural Straight / Soft Wave When Air-Dried
Weight / Weft	50g per weft	Seam Width	0.11 inch (0.3 cm)
Hair Width	~28.7 inches (73 cm) per 50g weft	Lengths	18" – 24" (Custom Up to 32"+)
Recommended	100g – 200g (2–4 wefts) for full head	Installation	Sew-In or Braidless Bead Method
Heat Safe	Style freely once installed	Lifespan	2–3 Years With Proper Care
Move-Up	Every 6–8 Weeks Recommended	Custom Options	Colors, Lengths, Textures Available

Why Choose COOVIP Machine Weft Extensions?

Fuller, Thicker Results High density root-to-tip with precision stitching for minimal shedding and long-lasting volume.	Long-Lasting Durability Tightly stitched seams hold up to frequent washing and heat styling without fraying or unraveling.
Premium Raw Human Hair 100% cuticle-aligned raw hair — silky, tangle-free, colour and style just like natural hair.	Custom Color & Length Factory-direct custom colours and lengths: ash blonde, balayage, piano blends, and more.

Tools Required

Tool	Purpose
Machine Weft Hair	Pre-sewn, color-matched wefts — ready to sew or bead onto natural hair
Tail Comb	Clean horizontal sectioning along each row
Sectioning Clips	Hold separated sections out of the way while working each row
Curved Needle & Thread	Sew-in method: secures weft firmly onto the braid or bead base
Silicone Micro Beads	Braidless method: anchor rows of natural hair for bead attachment
Bead Pulling Needle	Thread natural hair through silicone-lined beads quickly and cleanly
Loop / Extension Brush	Gentle detangling from ends upward without stressing the weft

How Many Wefts Do I Need?

Wefts	Weight	Result	Best For
1–2	50–100g	Adds fullness & blends into existing hair	Crown fill, thin areas
2–3	100–150g	Lengthens & noticeably thickens	Medium length / density
4	200g	Dramatic volume & length transformation	Short / thick hair, bobs

■ Always leave a natural shadow zone along the entire hairline perimeter. Never place wefts flush to the hairline — keeps rows hidden and prevents tension at the edges.

Aftercare & Maintenance

Washing

- Wash 2–3x/week with sulfate-free, color-safe shampoo.
- Avoid conditioner near weft roots — can cause slippage.
- Rinse cool or lukewarm; condition on ends only.

Drying

- Air-dry whenever possible, especially near the weft seam.
- Blow-dry on medium heat (100–120°C) with heat protectant.
- Never sleep with wet hair — prevents matting at the wefts.

Brushing & Styling

- Brush from ends upward, holding near the weft.
- Use a soft-bristle or loop extension brush only.
- Sleep in a loose braid on a silk or satin pillowcase.

Removal & Care

- Sew-in: have a professional remove stitching every 6–8 weeks.
- Beaded: use bead-opening pliers to release each bead gently.
- Deep condition natural hair after removal before reinstalling.

Steps 1–5: Braidless Bead method — section, bead and loop the hair row. Steps 6–9: Sew the weft onto the bead row for a flat, invisible finish lasting 6–8 weeks.



01

Section the Hair

Take a triangular section ~half an inch wide. Work from nape upward, leaving a shadow zone along the hairline.



02

Start Beading

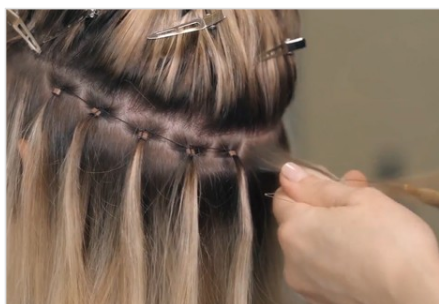
Thread hair sections through silicone-lined micro beads with a bead needle. Space beads evenly across the row.



03

Secure With Pliers

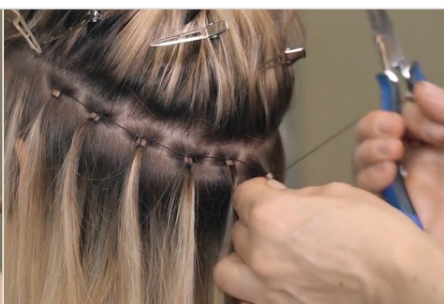
Clamp each bead flat with micro-bead pliers. Beads should sit flush against the scalp without pinching.



04

Continue the Row

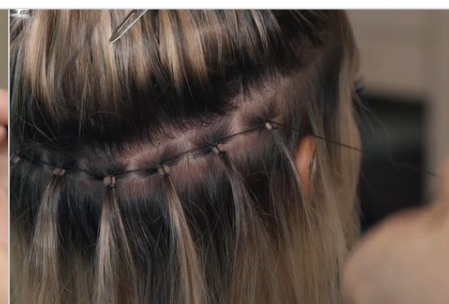
Thread and clamp beads at consistent intervals across the full row before attaching the weft.



05

Loop the Hair

Loop each hair section over the bead row. After each loop, go right over the bead and continue across.



06

Cut the Thread

Once the full row is looped, cut thread leaving a small tail to prevent unraveling before knotting.



07

Prepare to Sew

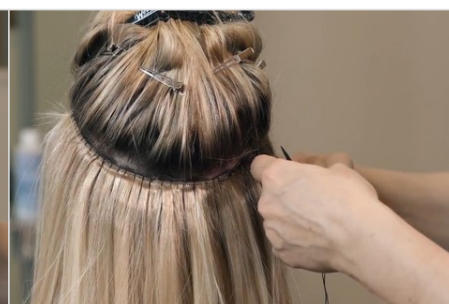
Thread a curved needle with matching colour thread. Align the weft seam with the bead row.



08

Start With a Knot

Begin with a secure knot at one end. Stitch evenly across the entire row using a blanket or lock stitch.



09

Cut Thread & Finish

Knot and lock thread at both ends. Trim close to knot. Release natural hair over wefts and blend.

COOVIP Raw Human Hair vs Standard Machine Weft Extensions

Feature	COOVIP Raw Human Hair	Standard Extensions
Cuticle Layer	100% Intact & Aligned	Stripped or Misaligned
Hair Source	Single European Donor	Multiple Donors Mixed
Processing	Acid-Free, Silicone-Free	Acid Bath + Silicone Coat
Weft Stitching	Precision Double Seam — Minimal Shedding	Single Stitch — Higher Shedding
Tangle Resistance	Natural — No Coating Needed	Silicone Washes Off Over Time
Heat Safe	Yes — Style Freely	Limited — Coating Degrades
Lifespan	2–3 Years	6–12 Months

Seasonal Care Tips

Summer

- Shield hair from UV to prevent frizz and colour fading.
- Trim regularly to prevent split ends.
- Apply leave-in conditioner before swimming — protects against chlorine.

Winter

- Use a silk pillowcase to reduce friction overnight.
- Deep condition weekly for extra hydration.
- Brush gently after wearing hats or beanies to prevent matting.

■ Need custom colors, lengths, or wholesale pricing? COOVIP HAIR is a factory-direct manufacturer — contact us for color matching, bulk orders, and salon support at cooviphair.com.